

OIML test certificate no. D09-03.19 Revision 2

OIML C of C no. R60/2000-CN-00.02

NTEP certificate no. CC07-012A1






- Alloy steel IP67 beam load cell
- Adhesive sealed
- Suitable for platform weighing, bed weighing, etc.
- High accuracy, high reliability






Capacity	Accuracy	Part-Number
100 kg	C3	H8C-C3-100kg-4B
250 kg	C3	H8C-C3-250kg-4B
500 kg	C3	H8C-C3-500kg-4B
1t	C3	H8C-C3-1.0t-4B
1,5t	C3	H8C-C3-1.5t-4B
2t	C3	H8C-C3-2.0t-4B
2.5t	C3	H8C-C3-2.5t-6B
3t	C3	H8C-C3-3.0t-6B
5t	C3	H8C-C3-5.0t-6B
10t	C3	H8C-C3-10t-6B

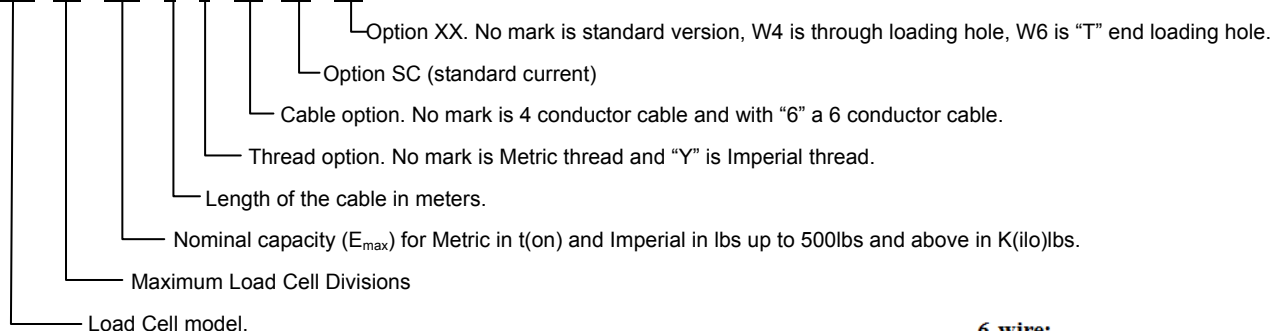
Specification:

		C3	OIML R60 C3	OIML R60 C3	OIML R60 C3
Accuracy class		C3	OIML R60 C3	OIML R60 C3	OIML R60 C3
Output sensitivity (= FS)	mV/V	3.0 ± 0.003 ¹			
Nominal capacity (E _{max})	t ²	0.1, 0.25	0.5, 1, 1.5, 2, 2.5	3, 5	10
Maximum number of load cell intervals (n _{LC})		3000			
Ratio of minimum LC verification interval Y = E _{max} / V _{min}	Y	10.000	15.000	7.000	4.000
Combined Error	%FS	≤ ± 0.020			
Minimum dead load	t	0			
Safe overload	of E _{max}	150 %			
Ultimate overload	of E _{max}	300 %			
Zero balance	of FS	≤ ± 1.0 %			
Excitation, recommended voltage	V AC/DC	5 ~ 12			
Excitation maximum	V AC/DC	18			
Terminal resistance, input	Ω	350 ± 3.5			
Terminal resistance, output	Ω	350 ± 3.5			
Insulation impedance	MΩ	≥ 5000 (at 50VDC)			
Temperature range, compensated	°C	-10 ~ +40			
Temperature range, operating	°C	-35 ~ +65			
Element material		Alloy steel nickel plated			
Ingress Protection (according to EN 60529)		IP67			
Recommended torque on fixation bolts	Nm	M12: 100 M18: 200 M24: 700			
ATEX classification (optional)		II1G Ex ia II1C T4	II1D Ex iaD 20 T73°C	II3G nL IIC T4	

Note 1: Current calibration (SC) is optional. Note 2: Imperial capacities also available

Ordering Info:

H8C - C3 - 1.0t - 4 - - BX - SC - XX



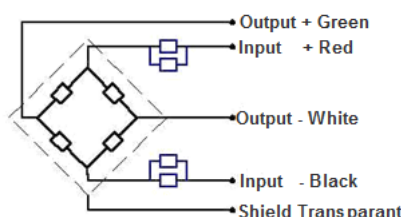
Shielded, 4 conductor cable: Ø 5mm.

Standard cable length: 4m up to 2t and 6m for the higher capacities.

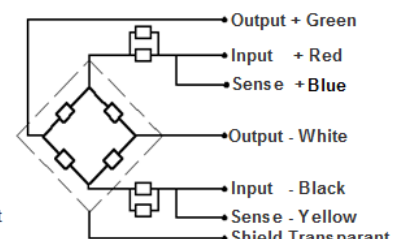
Shield in not connected to the element.

Cable type and length can be changed on customer's request.

4-wire:

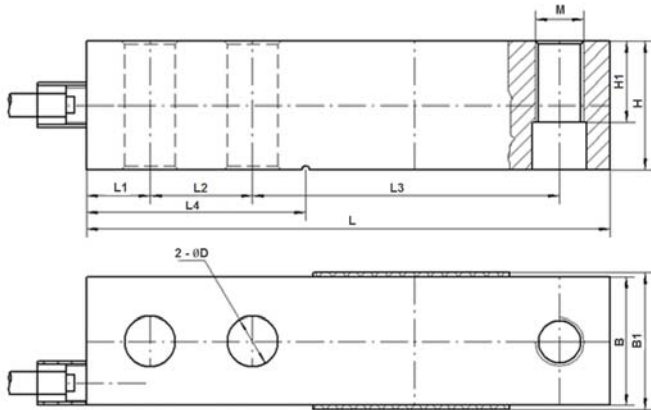


6-wire:

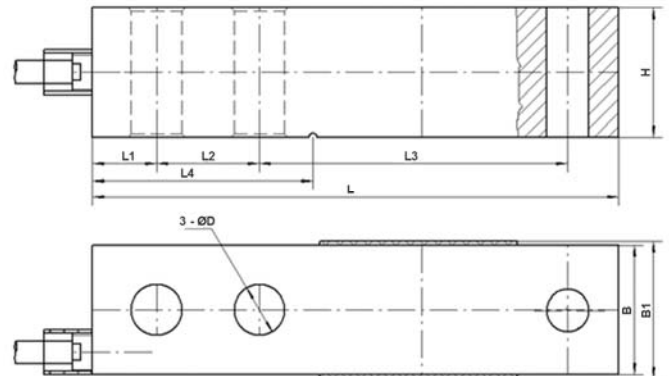


Outline Dimensions in mm

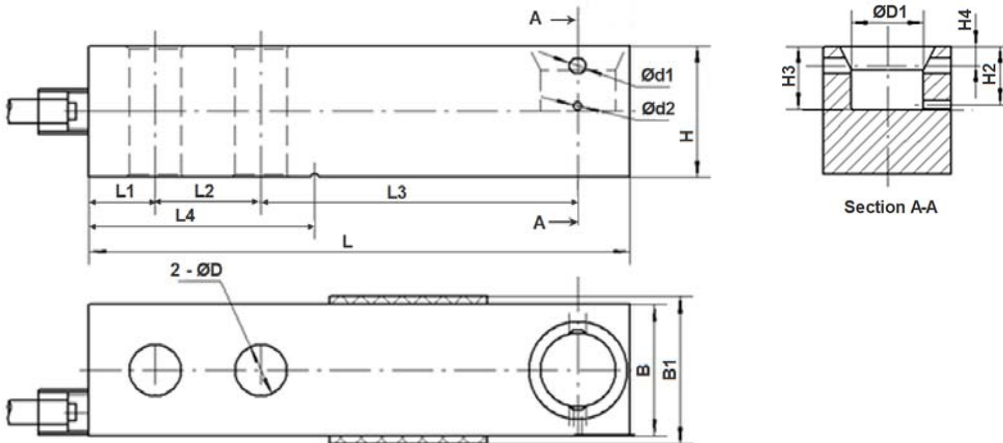
Standard version



Option W4 (through loading hole)



Option W6 ("T" end loading hole)



Capacity	L	L1	L2	L3	L4	B	B1	H	H1	H2	H3	H4	ØD	ØD1	Ød1	Ød2	M
0.1t – 2t	130	15.8	25.4	76.2	54.2	31.8	34	31.8	15.8	14.5	15.8	4.8	13.5	18	4	2	M12x1.75
200lb – 4klb	130	15.8	25.4	76.2	54.2	31.8	34	31.8	15.8	14.5	15.8	4.8	13.5	18	4	2	½-20UNF
5Klb (SE)	130	15.8	25.4	76.2	54.2	31.8	34	31.8	15.8	14.5	15.8	4.8	13.5	18	4	2	½-20UNF
2.5t – 5t	171.5	19.1	38.1	95.3	77.2	38.1	40	38.1	18.8	17.5	18.8	4.8	19.8	25	4	2	M18x1.5
5Klb – 10Klbs	171.5	19.1	38.1	95.3	77.2	38.1	40	38.1	18.8	17.5	18.8	4.8	19.8	25	4	2	¾-16UNF
10t	222.3	25.4	50.8	120.7	101.6	50.8	52.4	50.8	25.4				26				M24x2
20Klb	222.3	25.4	50.8	120.7	101.6	50.8	52.4	50.8	25.4				26				1-12UNF